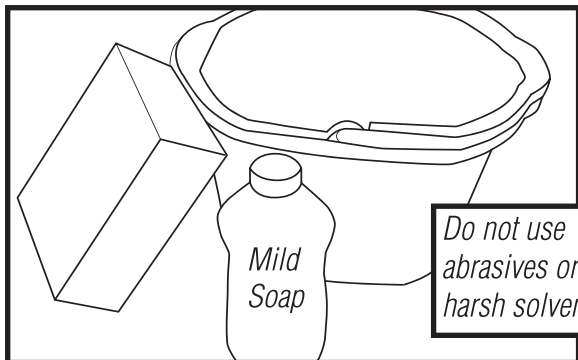
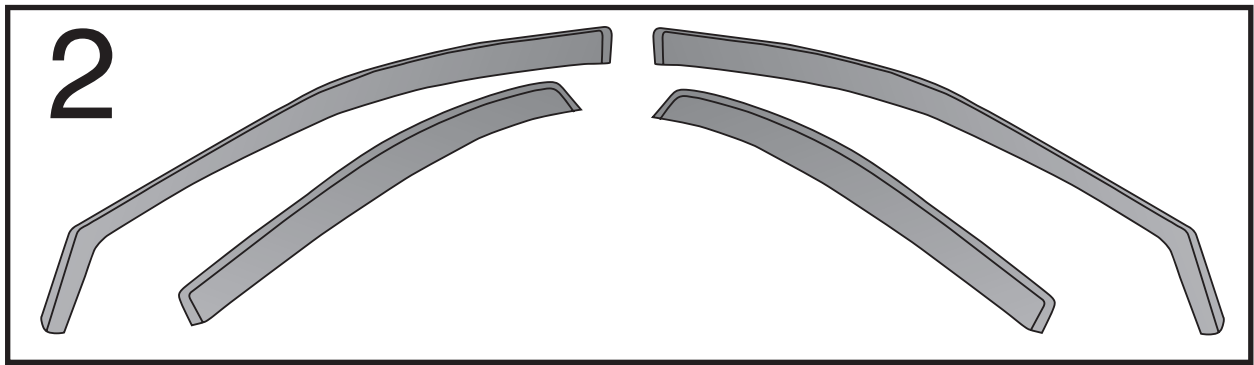
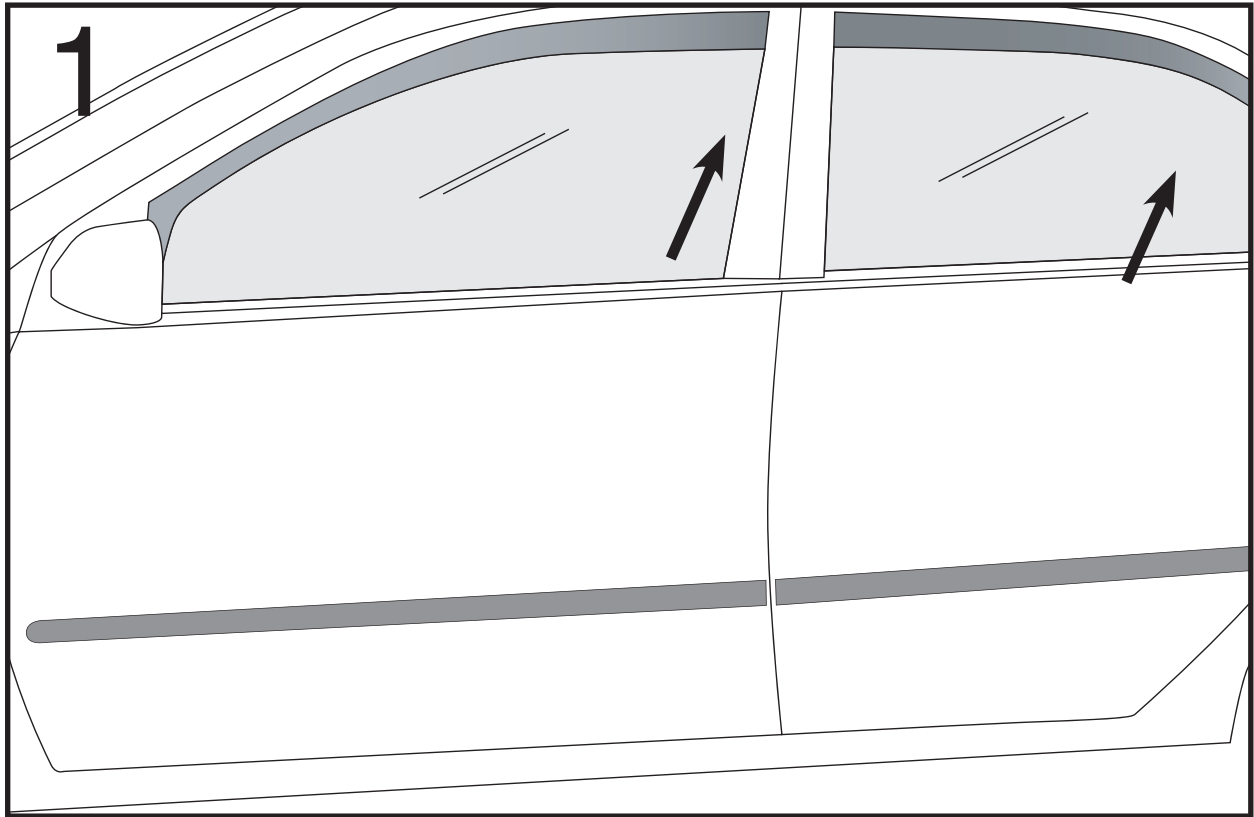


PLATINUM-AIR

ADVANCED WIND DEFLECTORS

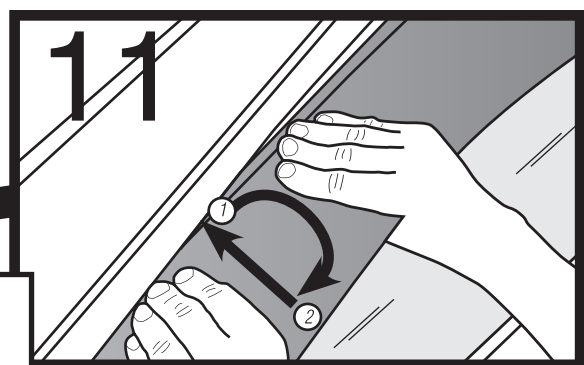
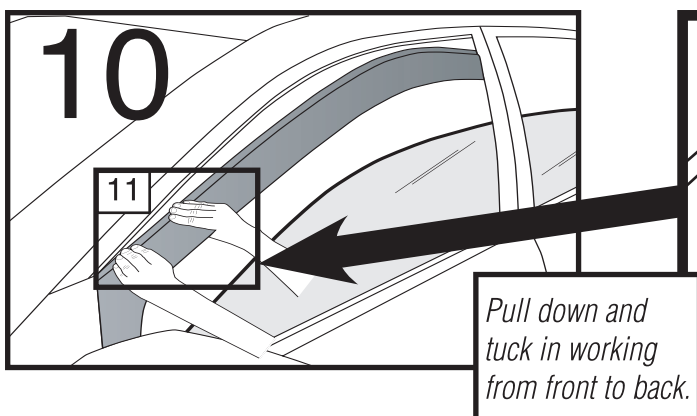
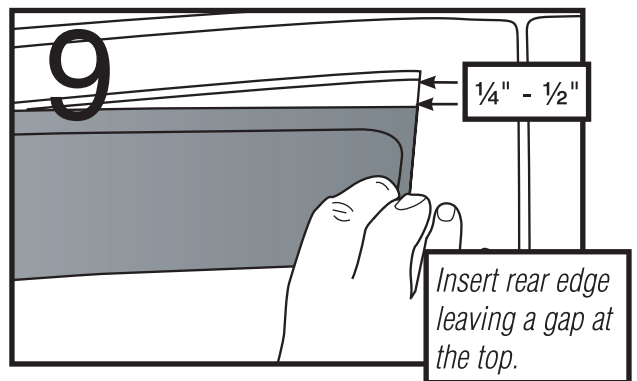
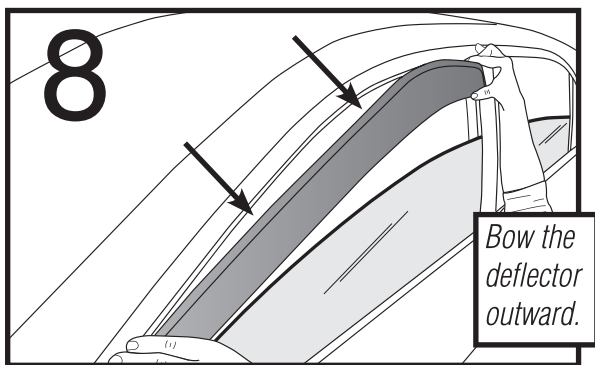
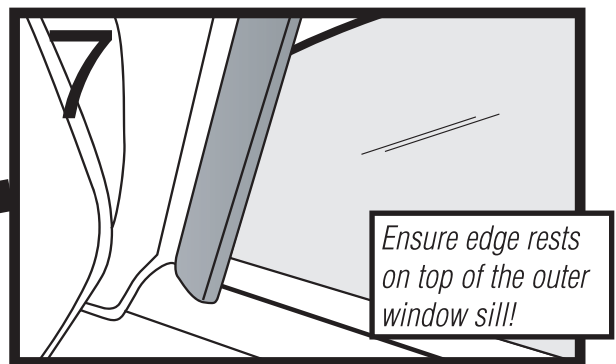
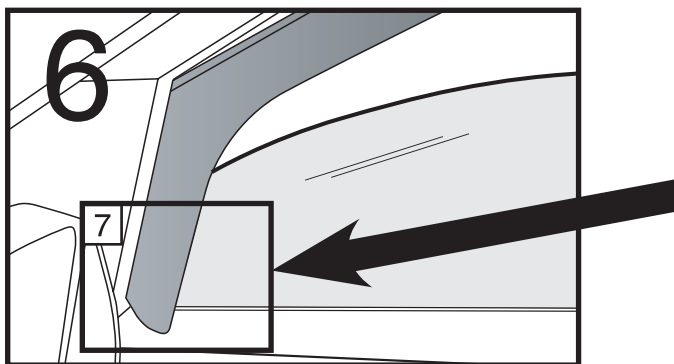
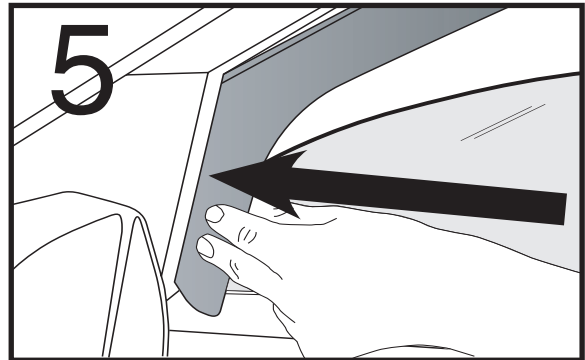
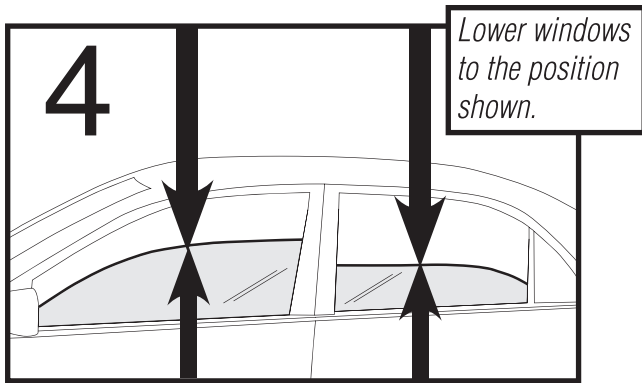
INSTALLATION INSTRUCTIONS

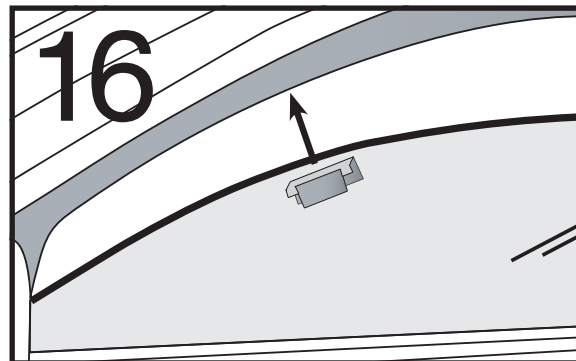
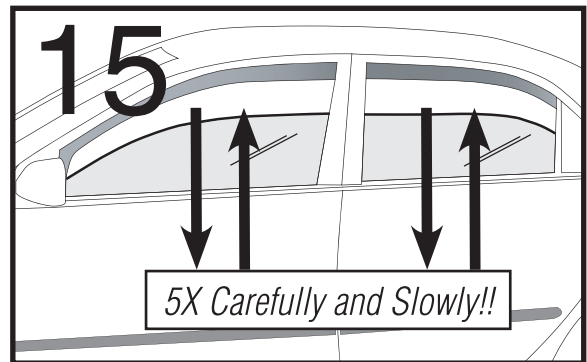
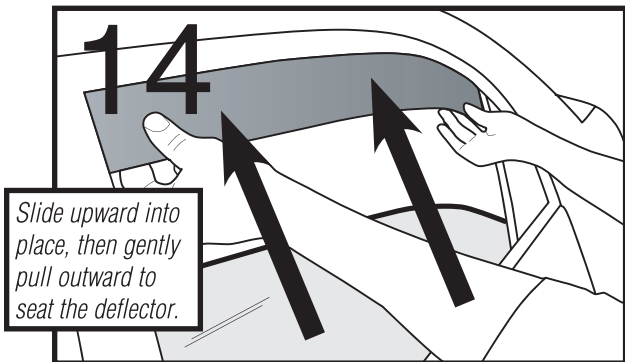
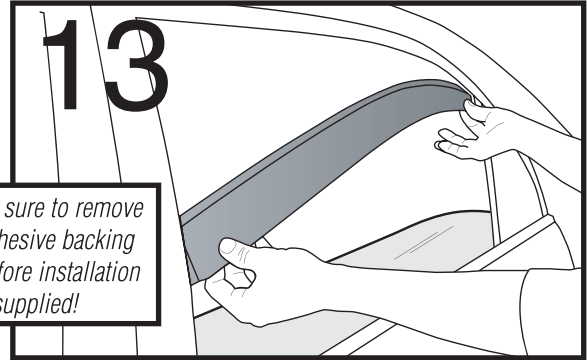
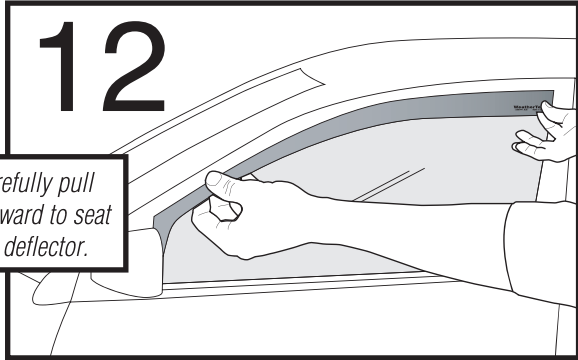


*Do not use
abrasives or
harsh solvents!*



*Clean top edge
of window.*





TIPS FOR PROPER FIT

- Ensure that the only part of the deflector inserted into the window channel is the thin, machined flange along edge of the deflector.
- The bottom edge of the front deflector must be resting on the door's outer weatherstrip molding. See inset of figure 5.
- Check that the thin, machined flange of each deflector is fully and evenly inserted into the window channel. The deflector flange is designed to rest in the main window channel between the window glass and the rubber seal.
- For windows with automatic raising feature: Roll the window all the way up without activating the automatic feature. Leave the window all the way up for at least 12 hours. The automatic raising feature should now function properly.
- If windows are equipped with safety feature that automatically opens the window if any resistance is met, simply sandwich the window with your hand and push upwards while raising the window. This should allow the window to close fully. Leaving the window in the closed position for 12 hours will ensure proper functionality.
- To secure the deflector 100%, use the fixing clips we have also provided. Once the deflector is in position and you have raised the window 5 times as per photo, simply slide the clip between the deflector and frame and push into position using a long screw driver. There should be two markings on top of the clip so position the end of your screw driver under the clip and push the clips upwards until it is wedged between the frame and deflector.